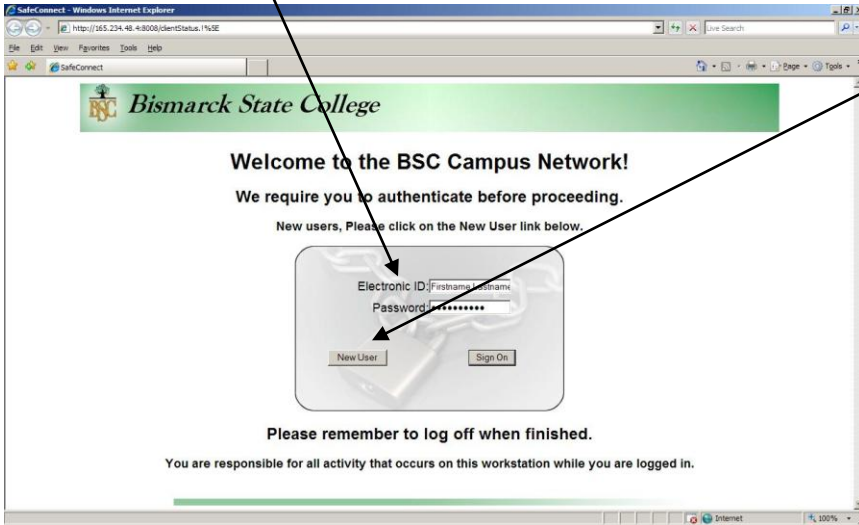


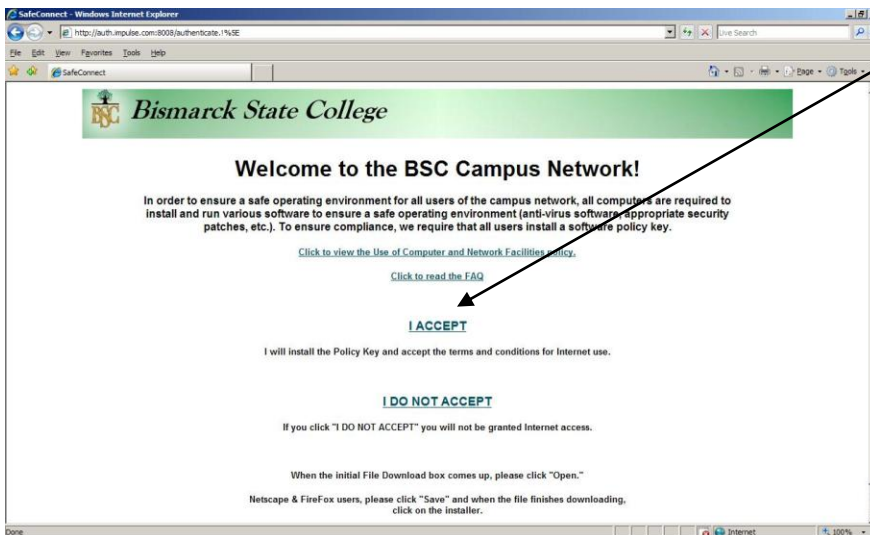
# Bismarck State College Network Access Control

Attaching to the BSC campus network: The first time you try to connect to the Internet from your computer you will be required to install a "Policy Key". The policy key helps secure our network by ensuring you have current antivirus software installed, updated and running on your computer, are not running peer to peer file sharing programs, etc. A "Welcome to the BSC Campus Network" screen will appear.

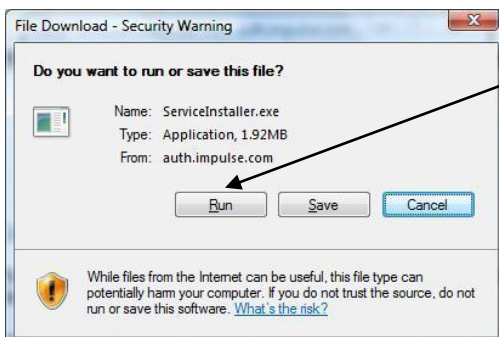
1. Enter your "Electronic ID" and "Password". If you have not activated your network account, click on "New User" and follow the instructions to obtain an Electronic ID. Detailed instructions on activating your network account can be found at <http://www.bismarckstate.edu/computers/faq/ActivateAccounts.pdf>



2. A second "Welcome to the BSC Campus Network" screen appears which requires you to agree to install the Policy Key and to agree to abide by the "Use of Computer and Network Facilities" policy. Click "I ACCEPT". (If you click "I DO NOT ACCEPT", you will not be granted access to the network.)



3. A "File Download - Security Warning" screen will appear. Click "Run".



4. If an "Internet Explorer - Security Warning" screen appears, click "Run".



5. A Safe Connect screen will appear. Click on "Install" to install the policy key.



6. Click "OK" on the following screen.



At this point you should be ready to use your computer on the BSC network. The Policy Key installation process will happen only one time. After the Policy Key has been installed, Safe Connect will prompt you for your "Electronic ID" and "Password" (refer to step 1 on the first page) when connecting to the network.

If you are having problems connecting to the network, please call the Help Desk at 224-5442 for assistance.